



## CLERMONT COUNTY ENGINEER'S OFFICE

*"Improving your commute"*

Patrick J. Manger, P.E.-P.S.  
Clermont County Engineer

June 20, 2017  
Board of County Commissioners  
101 East Main Street  
Batavia, Ohio 45103

RE: Half Acre Road Closure/South Afton Sewer Extension Project  
Williamsburg Township

Dear Commissioners:

Pursuant to Section 5543.17 of the Ohio Revised Code, I have determined that a road closure is necessary for the South Afton Sewer Extension Project on Half Acre Road, and that it is impractical to construct a temporary highway/culvert and that a temporary detour is required.

Therefore, I have scheduled a road closure on Half Acre Road. The closure is located 1375' South of SR 276 on Half Acre Road. The road will be closed to through traffic on Tuesday, 6-27-2017 through Friday 6-30-2017. The length of detour is approximately 4.55 miles or 24,044 feet. The Office of the Clermont County Engineer shall notify the Communication Center and other affected agencies. All advanced warning and detour signs will be erected and maintained for this project. This project is associated with the Transportation Improvement District's West Clermont project. **Attached is the recommended detour.**

If I can provide any additional information, please call the Clermont County Engineers Office at (513)732-8857.

Sincerely,

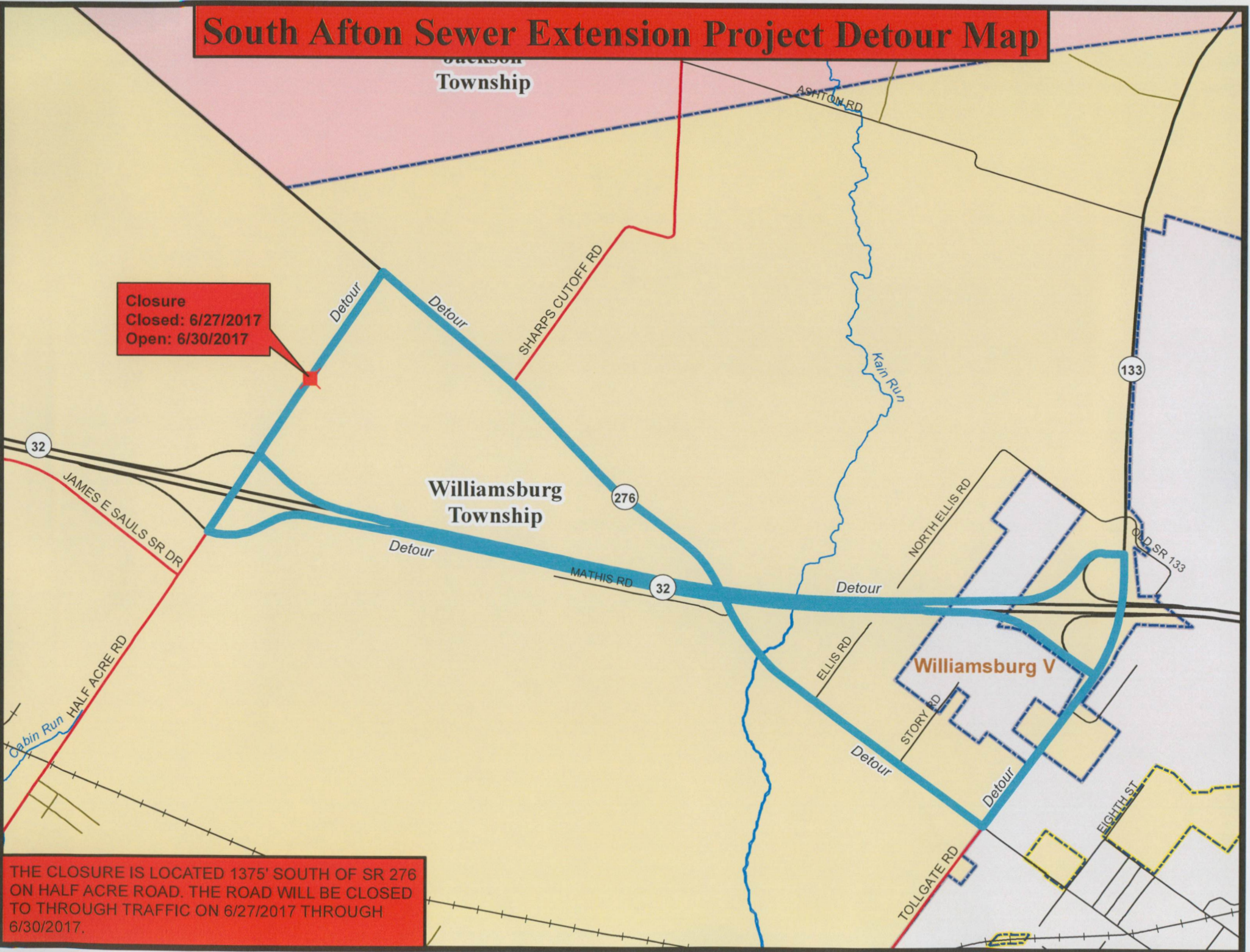
Patrick Manger, P.E., P.S.  
Clermont County Engineer

PM:jm

cc: Communication Center  
Williamsburg Township  
Williamsburg Township Fire/EMS  
Williamsburg Schools  
BCC  
CTC  
Sheriff  
State Patrol  
CCEO Staff  
Hwy Ops Staff  
CC Office of Public Information

# South Afton Sewer Extension Project Detour Map

Closure  
Closed: 6/27/2017  
Open: 6/30/2017



THE CLOSURE IS LOCATED 1375' SOUTH OF SR 276 ON HALF ACRE ROAD. THE ROAD WILL BE CLOSED TO THROUGH TRAFFIC ON 6/27/2017 THROUGH 6/30/2017.