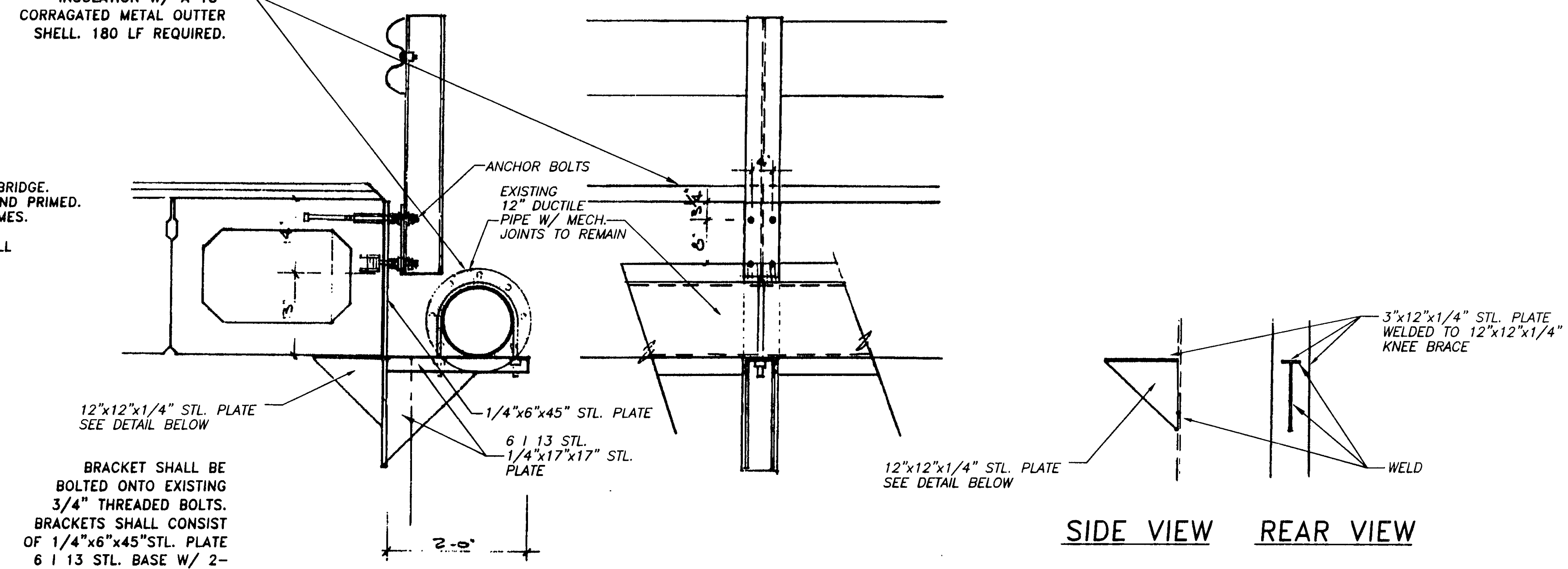


BRIDGE PLAN
SCALE: 1" = 30'

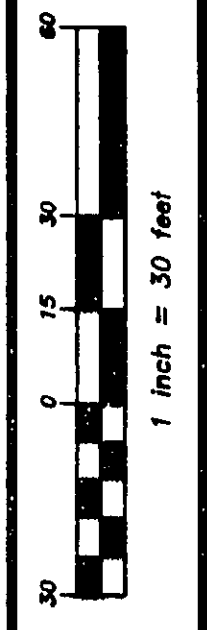
APPROVED BY ENG.
3" FOAMGLASS
INSULATION W/ A 18"
CORRUGATED METAL OUTER
SHELL. 180 LF REQUIRED.

- GENERAL NOTES:**
1. 12" DUCTILE MECH. JOINT TO REMAIN ON BRIDGE.
 2. BRIDGE BRACKETS SHALL BE SHOP MADE AND PRIMED.
 3. MAINTAIN ONE LANE OF TRAFFIC AT ALL TIMES.
 4. CONTRACTOR TO OBTAIN ROAD PERMIT.
 5. UTILIZE EXISTING GUARD RAILS, REPLACE ALL BOLTS/ANCHOR HARDWARE



BRACKET ANCHOR DETAIL
SCALE: 3/4" = 1'

BRACKET SHALL BE
BOLTED ONTO EXISTING
3/4" THREADED BOLTS.
BRACKETS SHALL CONSIST
OF 1/4"x6"x45" STL. PLATE
6 I 13 STL. BASE W/ 2-
1/4"x17"x17" TRIANGLE
KNEE BRACES - ALL
CONNECTIONS TO BE
SHOP WELDED. BRACKETS
TO BE SHOP PRIME.



BRIDGE PLAN
BRACKET ANCHOR DETAIL

ROUND BOTTOM ROAD BRIDGE
12" WATER MAIN HANGERS
621-0968

DRAWN BY: BRAD
DATE: MAY, 02

CLEVELAND COUNTY ENGINEER
CARL G. HARTMAN, P.E., P.S.
2881 CLEVELAND CENTER DRIVE
BATAVIA, OHIO 45103

2
2

2102PP01.DWG