

CLERMONT COUNTY



TRANSPORTATION IMPROVEMENT DISTRICT

February 2014

Still Want More Info?

Want to learn more about the work being done by the CCTID?

Come to our next board meeting. Our meetings are open to the public and are held the second Friday of every month, at 9:00 a.m. at the Clermont County Engineer's Office.

Our next meeting will be held on Friday, March 14, 2014.

Tell Us What You Think!

Email:
info@goclermont.org

Phone:
513-835-2417

Members Of The CCTID

Larry Fronk -
Chair of the CCTID
and Miami Township
Administrator

Matthew VanSant -
Vice-Chair of the CCTID
and President/CEO of the

ODOT announces new pattern of traffic at I-275 & SR 32 will begin on Tuesday, Feb. 18

Mother Nature has delayed this work for several weeks, but local transportation planners are hoping the weather will allow crews to get back to work next week. As part of the ongoing improvement work at the Interstate 275/State Route 32 interchange, two new ramp configurations will be put in place:

Northbound I-275 ramp reconfiguration:

The northbound to westbound circle ramp will close permanently. All northbound traffic will exit at existing eastbound ramp to the new traffic signal at SR32. At this signal, motorists will have the option to travel east (right turn) or west (left turn) on SR32.

Southbound I-275 ramp reconfiguration:

The southbound to eastbound circle ramp will close permanently. All southbound traffic will exit at existing westbound ramp to the new traffic signal at SR32. At this signal, motorists will have the option to travel east (left turn) or west (right turn) on SR32.

Once complete, traffic will not be restricted from traveling either direction on SR 32 from I-275. The reconfigurations will eliminate four weave/merge points at the interchange - two on SR 32 and two on I-275, making access safer and easier for motorists wishing to enter and exit I-275 and SR 32.

The switch is scheduled to take place Tuesday, Feb.18. To accommodate work to put traffic on these new ramps, lane closures will be in place on northbound and southbound I-275, beginning at 7 p.m. Tuesday, Feb. 18, and reopening by 6 a.m. Wednesday, Feb. 19. The diagram below illustrates in green both new ramp configurations. All work is weather permitting.

Clermont County Chamber of Commerce

Pat Manger, P.E., P.S. - Secretary-Treasurer of the CCTID and Clermont County Engineer

Ken Geis - CCTID Board Member and Union Township Administrator

Jeff Wright - CCTID Board Member and City Manager for the City of Milford

John Becker - Ex-Officio Member of the CCTID and State Representative, Ohio's 65th House District

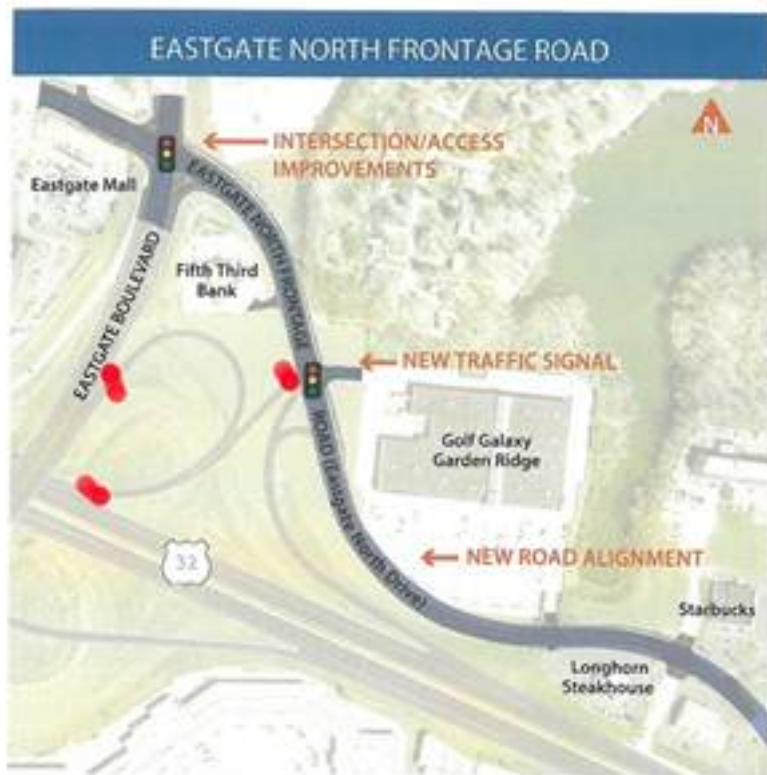
Joseph Uecker - Ex-Officio Member of the CCTID and State Senator, Ohio's 14th Senate District



Nightly lane closures:

To accommodate a deep pipe installation, the ramp from eastbound SR 32 to Eastgate Blvd will be closed 10 p.m. to 6 a.m. beginning Sunday, Feb. 16. Work is expected to take approximately one week.

Once traffic is placed on the new bridge, demolition of the existing Eastgate Boulevard Bridge will commence. To accommodate that demolition, nightly lane closures will be in place on east and westbound SR 32 from 8 p.m. to 6 a.m., beginning Tuesday, Feb. 18. Work is expected to take approximately two weeks. Construction activity will also require closure of the ramp from northbound Eastgate Blvd. to westbound SR 32 and the ramp from Eastgate North Frontage Road to the Eastgate Blvd/westbound SR 32 ramp from 10 p.m. to 6 a.m. Tuesday, Feb. 18 and Wednesday, Feb. 19. Diagram below indicates closure in red. Arrow boards and/or signs will be in place prior to the work zone to alert motorists of the upcoming lane closures.



To help ensure the safety of the construction workers as well as the traveling public, motorists should remain alert, reduce their speed and watch for stopped traffic while passing through the work zone.

Ohio's highways are essential to keeping and creating new jobs. With a mission to provide easy movement of people and goods from place to place, the Ohio Department of Transportation (ODOT) is responsible for maintaining one of the largest transportation networks in the nation. Guided by ethical principles and accountability, ODOT works to improve safety, enhance travel and advance economic development. As a \$2.8 billion enterprise, the department wisely invests in its core services of snow and ice removal, annual construction program and highway maintenance operations.

Clermont County Transportation Improvement District
info@goclermont.org | 2381 Clermont Center Dr.
Batavia, OH 45103