

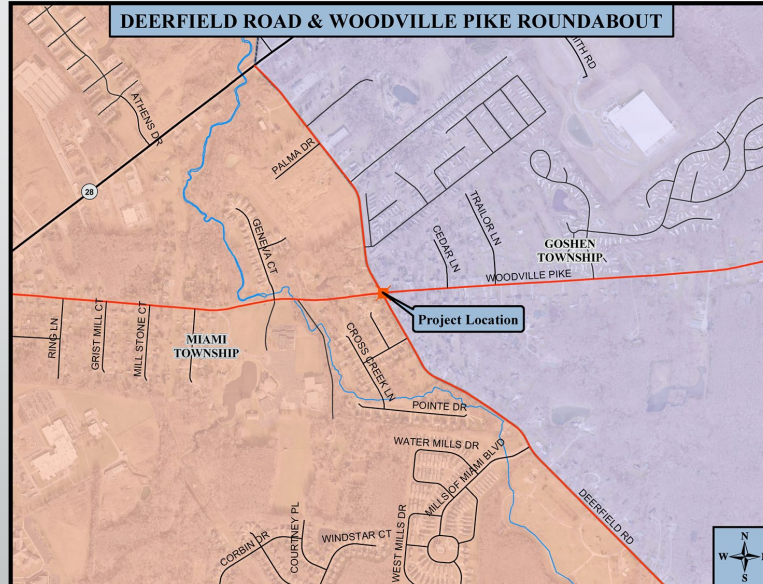


Clermont County Transportation Improvement District

January 9, 2026

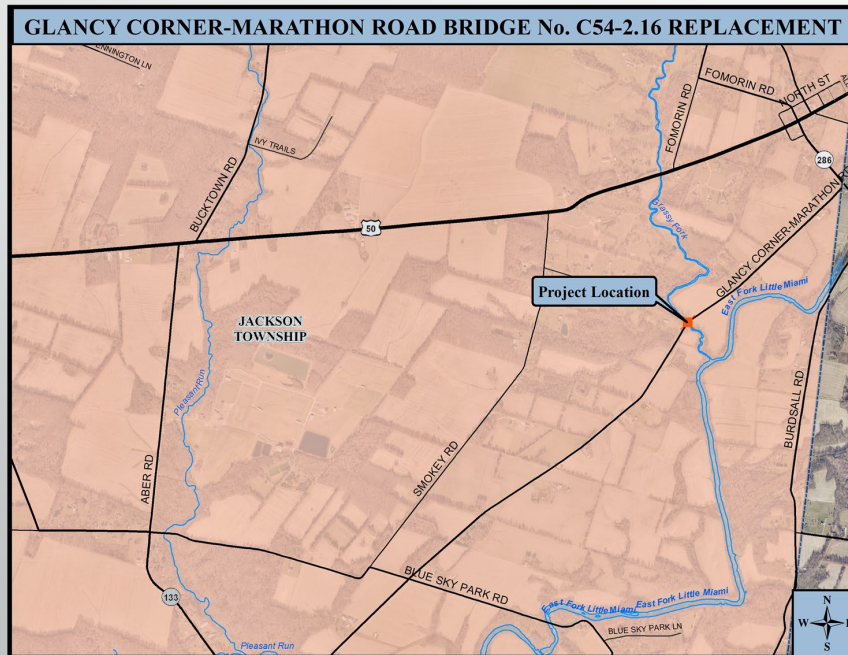
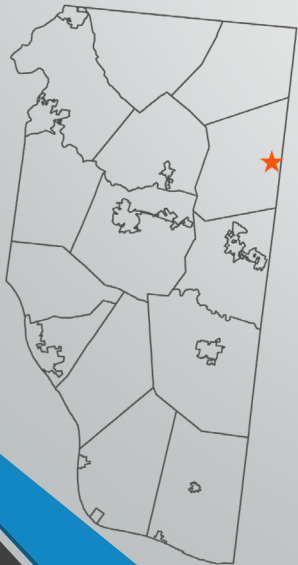
Deerfield Road and Woodville Pike Roundabouts

- Stage 2 and Preliminary R/W ODOT and County comments have been sent back to consultant
- Utilities Coordination Meeting 12/11
- 2028 Construction



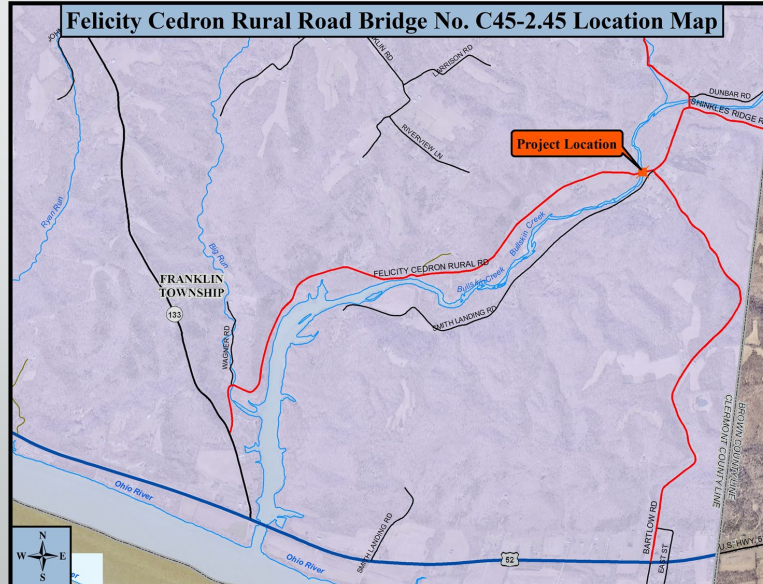
Glancy Corner-Marathon Road Bridge Rehabilitation (C54-2.16)

- Complete – bridge opened
12/9/25



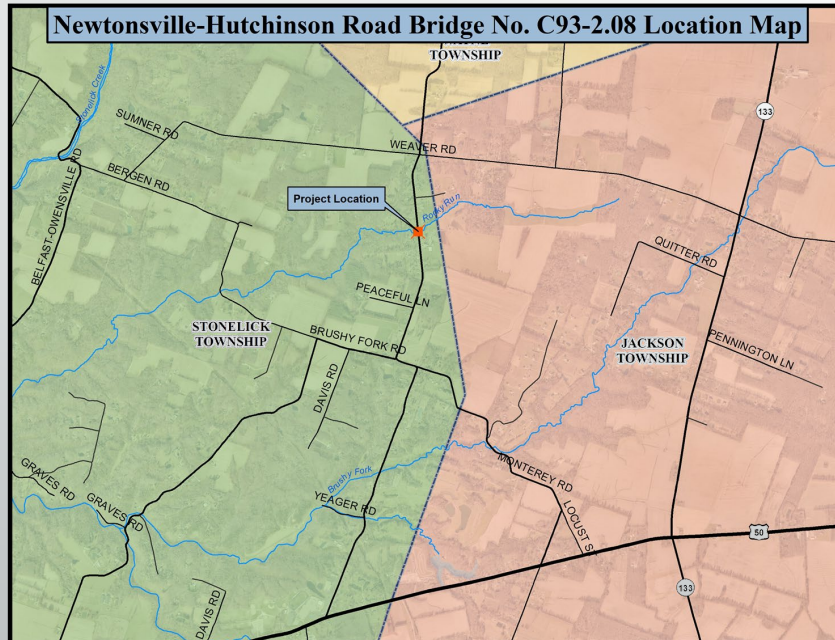
Felicity Cedron Road Bridge Rehabilitation Project (C45-2.45)

- Stantec submitted Final Tracings 10/10, ODOT review complete
- PS&E approved, authorization to advertise received 12/4/25
- Bid 1st Quarter, 2026



Newtonsville Hutchinson Road Bridge Replacement (C93-2.08)

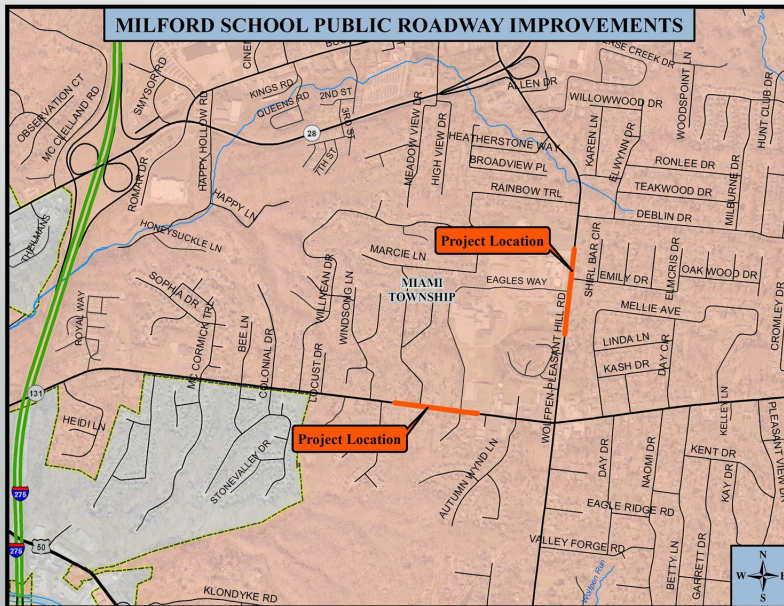
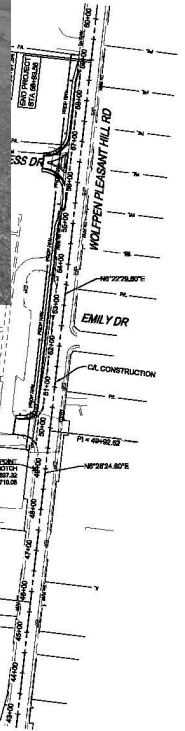
- Complete – bridge opened
12/1/25



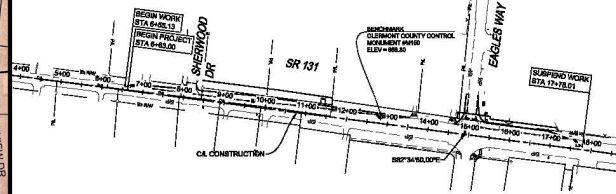
Milford Schools

Roadway Improvements

- Ford Development Contractor
- Construction of right turn lane on Wolfpen at entrance has begun
- Stormwater work complete
- Waterline installation to begin this month

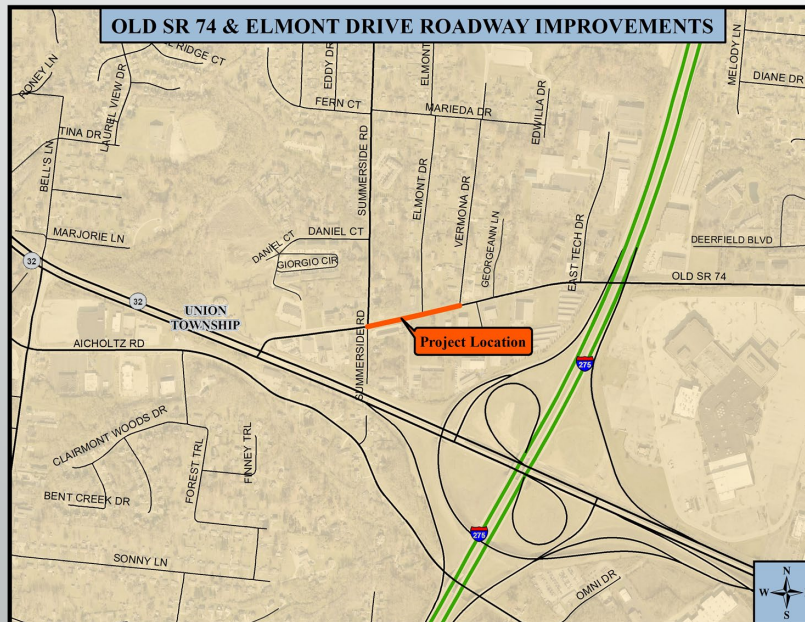


DESCRIPTION	WEST-ING	EASTING
MEAN WORK	4256.65	4278.27
MEAN PROJECT	4256.63	4284.27
SUSPENSE WORK	4261.65	2198.75



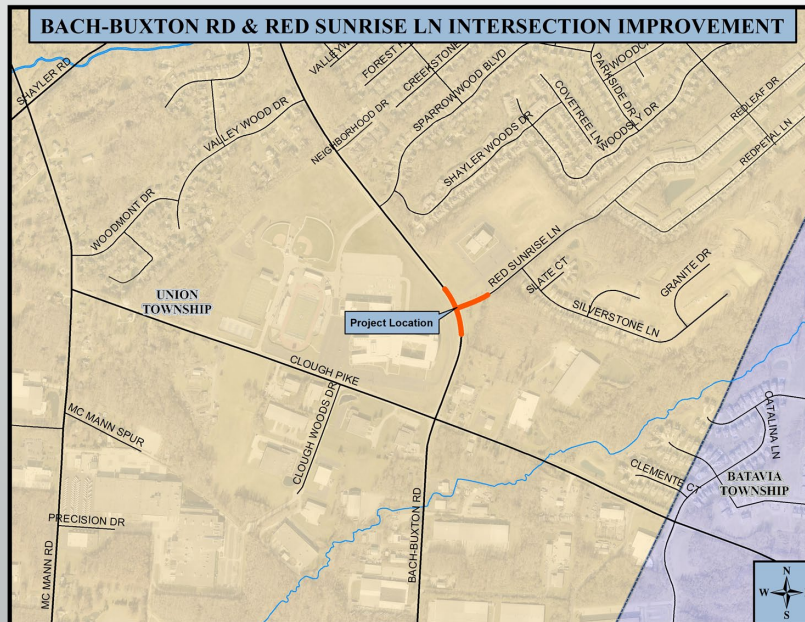
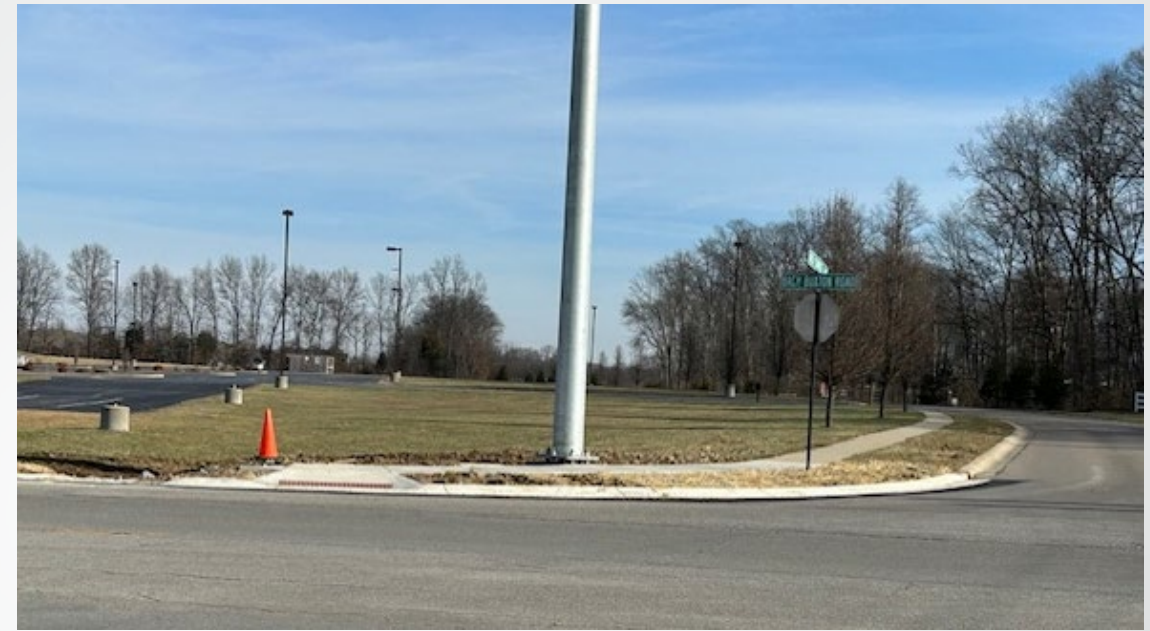
Old SR 74/Elmont Drive

- Design Contract Amended to extend through Vermona Dr
- Design Complete
- Submitted for OPWC Funding, July 2026 Funds



Bach Buxton @ Red Sunrise Intersection Improvements

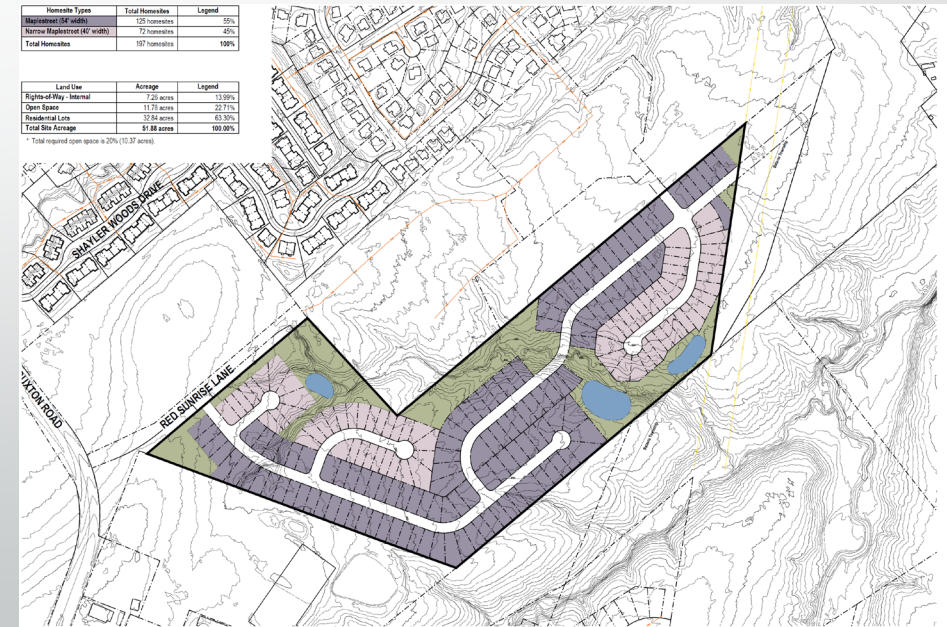
- Signal poles installed. No mast arms or wiring yet
- Curb ramps and sidewalk installed
- Continuing signal work in mid January



HomeSite Types	Total HomeSites	Legend
Majorstreet (64' width)	125 HomeSites	55%
Minor Street (40' width)	72 HomeSites	58%
Total HomeSites	197 HomeSites	100%

Land Use	Acreage	Legend
Rights of Way - Internal	7.20 acres	13.08%
Open Space	11.75 acres	22.71%
Residential Lots	32.64 acres	63.30%
Total Site Acreage	51.60 acres	100.00%

* Total required open space is 20% (10.32 acres)

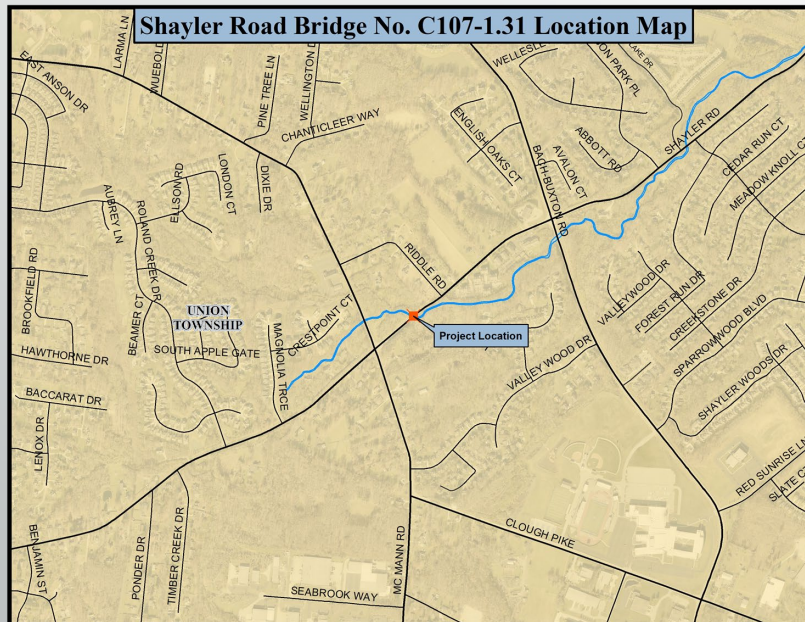


Grand Communities, LLC
Caswell Property Union Township, Clermont County, Ohio
 Concept Plan



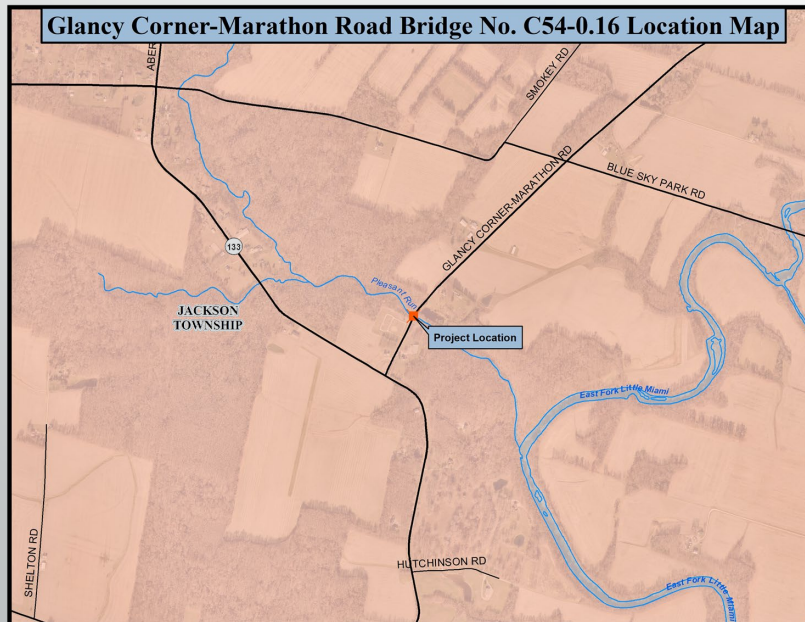
Shayler Road Bridge Rehabilitation (C107-1.31)

- Fishbeck continuing design of composite deck
- Stage 1 Plans submitted 11/14
- 2027 Construction



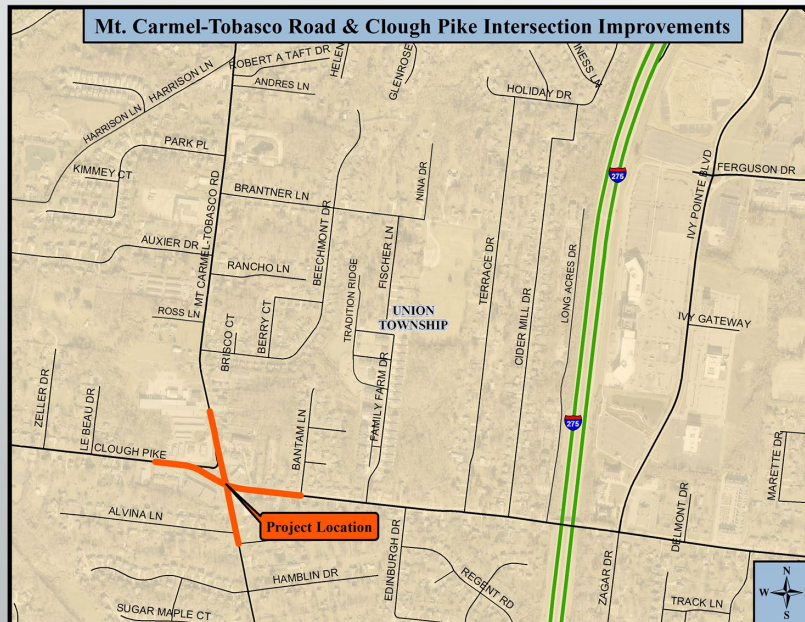
Glancy Corner Road Bridge Rehabilitation (C54-0.16)

- Compass Infrastructure Group under contract
- Stage 1 plans due Summer 2026



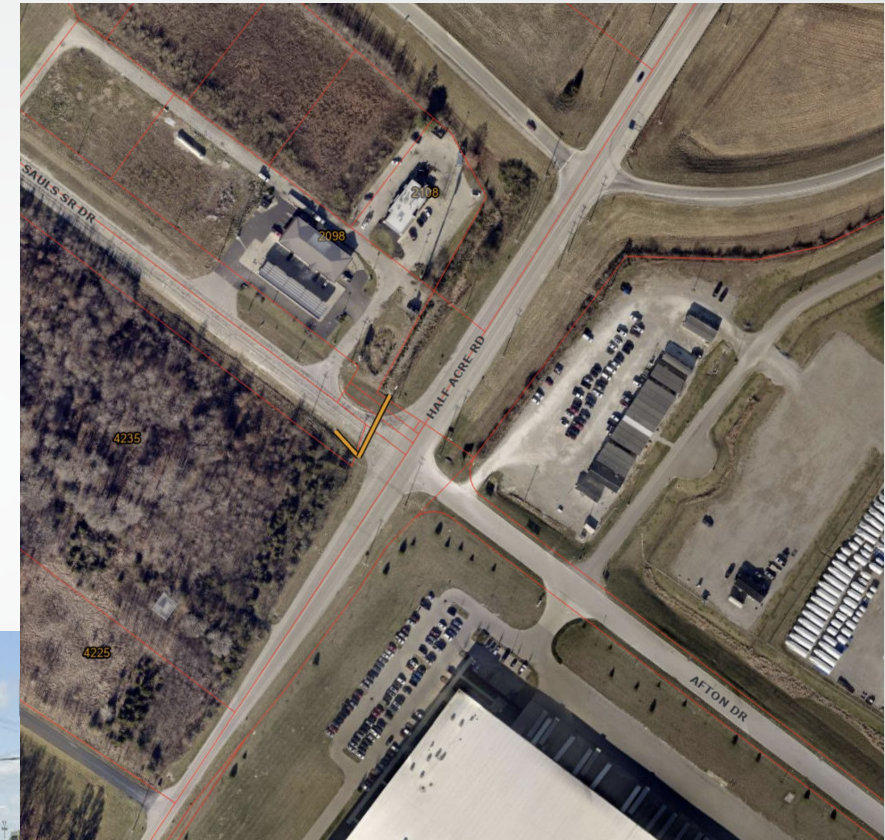
Mt. Carmel Tobasco - Clough Pike Intersection Improvements

- American Structurepoint
- Analyzing traffic data & surveying
- Preliminary Engineering complete by 3/31/26



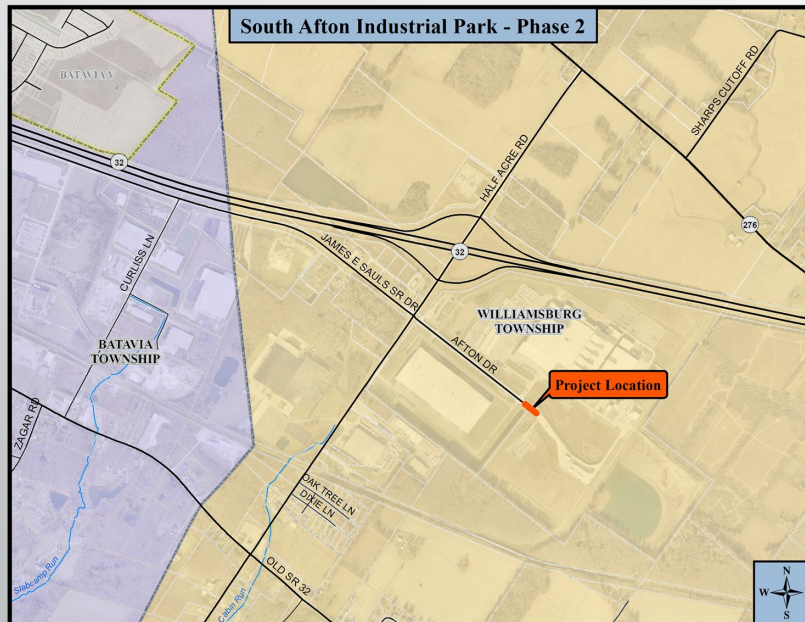
Half Acre-Afton Drive Roundabout

- Field survey / base map & traffic analysis complete
- Progress Meeting w/ DLZ on 12/22 to review alternatives
- Preliminary Engineering complete by 2/1/26



South Afton Industrial Park – Phase 2

- Barret Paving Materials
- Pre-Con Meeting held 12/11/25
- Complete construction by 5/1/26



Bethel Concord Road Bridge Replacement (C11-2.77)

- Damaged during spring floods
- BG Engineering Group – design is near complete
- Geotech & Prelim Design Report - complete
- Pursuing OEMA Disaster Relief Funding



Herold Road at SR 32 Intersection Study

- New Project
- US Dept of Housing and Urban Development (HUD) Funding
- Anticipate LOI early '26

