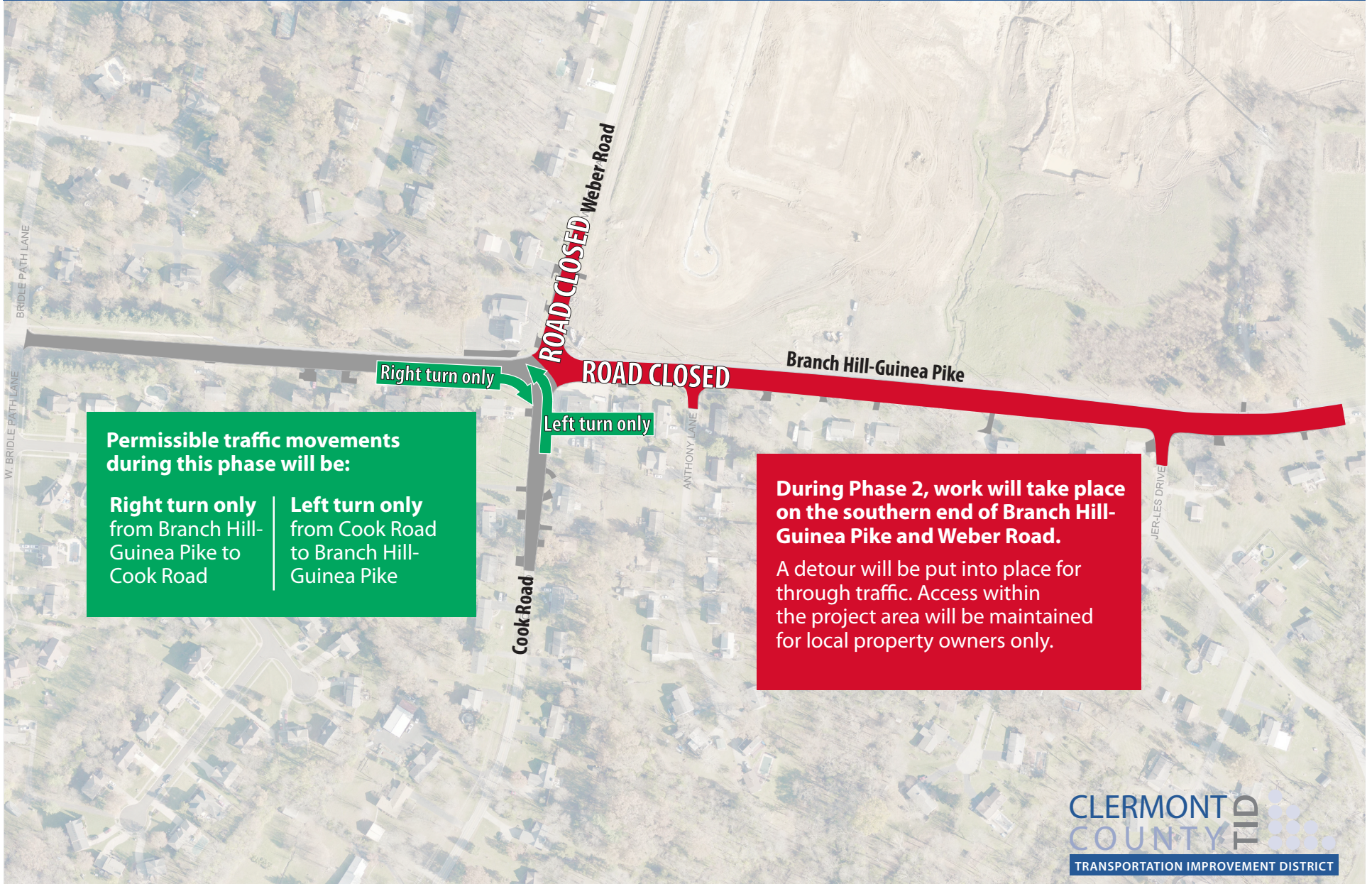


# BRANCH HILL - GUINEA WIDENING: PHASE 2

Expected timing: July 20 through August 15



**Permissible traffic movements during this phase will be:**

|   |  |
|---|--|
| <b>Right turn only</b><br>from Branch Hill-Guinea Pike to Cook Road | <b>Left turn only</b><br>from Cook Road to Branch Hill-Guinea Pike |
|---|--|

**During Phase 2, work will take place on the southern end of Branch Hill-Guinea Pike and Weber Road.**

A detour will be put into place for through traffic. Access within the project area will be maintained for local property owners only.