

September 9, 2014
ADDENDUM NO. 1

**Regarding: Project No. 90220
Old SR 74 & East Tech Drive Intersection Improvements
Clermont County Transportation Improvement District**

To All Bidders:

Please be advised that the following revisions/clarifications have been made to the Bid Package:

1. Section V, Bid Proposal and Bid Guaranty:

The bid opening date of Thursday, September 11, 2014 shall be revised as follows:

REVISED OPENING DATE SHALL BE TUESDAY, SEPTEMBER 16, 2014 AT 2:00 P.M. LOCAL TIME

2. Clarifications:

1. Sheet No. 20: Item 632 Combination Signal Support, Type TC-12.30, Design 6 Pole, with Mast Arms TC-81.21 Design 11 And TC-81.21 Design 12, Decorative (Union Metal 50305-B29-Y1), As Per Plan.
This signal support pole has been ordered from Path Master, Inc. by the Owner per the attached shop drawings. In addition to labor and equipment, this item shall include any material not having a separate pay item, in addition to that shown on the shop drawings, in order to complete installation of this item. This shall include, but is not limited to, items such as disconnects, photo cells, and fuse kits.
2. Sheet No. 20: Item 632 Combination Signal Support, Type TC-12.30, Design 5 Pole, with Mast Arms TC-81.21 Design 11 And TC-81.21 Design 4, Decorative (Union Metal 50305-B29-Y2), As Per Plan.
This signal support pole has been ordered from Path Master, Inc. by the Owner per the attached shop drawings. In addition to labor and equipment, this item shall include any material not having a separate pay item, in addition to that shown on the shop drawings, in order to complete installation of this item. This shall include, but is not limited to, items such as disconnects, photo cells, and fuse kits.

3. Section V, Bid Proposal and Bid Guaranty:

1. Bid Form: Reference No. 66 – Controller Item, Misc.: Adaptive Signal System Centracs Adaptive. This item is a duplicate of Bid Reference No. 60 and shall be disregarded. Cross out this line item in your bid proposal.

Please sign and return a copy of this letter by fax or mail to the Clermont County Engineer's Office prior to the bid opening at 2:00 P.M. local time on Tuesday, September 16, 2014 or with your bid documents at that time. Please complete the Bid Proposal, noting receipt of addendum.

Company Name

Signature Owner/Agent

Mail To: Clermont County Engineer, Attn: Jeremy Evans, 2381 Clermont Center Drive, Batavia, Ohio 45103

Fax To: Clermont County Engineer, Attn: Jeremy Evans, (513) 732-8875



Path Master, Inc., 1960 Midway Drive, Twinsburg, Ohio 44087
 330-425-4994, Fax 330-425-9338, www.pathmasterinc.com

July 7, 2014

Mr. Jeremy Evans
 Clermont County Engineers
 2381 Clermont Center Drive
 Batavia, OH 45103
 Ph: 513-732-8878
 Fax: 513-732-8875
 Email: jpevans@clermontcountyohio.gov

Quote 14-2102
Old SR 74 & East Tech Drive Poles

Bid Date:
 Completion Date:
 We are pleased to quote you the following:

BID REF	QTY	DESCRIPTION	CL	UNIT SELL	EXT. SELL
1.	1	Union Metal Memphis Family Decorative Pole With 45' Mast Arm, 15' Luminaire Arm And #97-29 Aluminum Decorative Base, With Powder Coated Finish, Includes Anchor Bolts, Arranged For Future 48' Mast Arm Less 48' Mast Arm, 50305-B29-Y1R	42D	11,660.000	11,660.00
2.	1	Union Metal Memphis Family Decorative Pole With Twin 44' & 34' Mast Arms, 15' Luminaire Arm And #97-29 Aluminum Decorative Base, With Powder Coated Finish, Includes Anchor Bolts, 50305-B29-Y2R	42D	12,600.000	12,600.00
3.	2	Union Metal Pendant Luminaire, NLJ1-110-250W, Includes Lamp	70	1,530.000	3,060.00
				<u>\$</u>	<u>27,320.00</u>



 Authorized Signature

Delivery: 14 - 16 Weeks, ARO & Approval
 F.O.B.: Twinsburg, Freight Allowed
 QUOTATIONS VALID FOR 30 DAYS
ORDERS ARE SUBJECT TO CREDIT APPROVAL

QTY	PLAN PG / POLE NO	UMC DESIGN NUMBER	MAST ARM DATA						MAST ARM FLANGE CONNECTION DATA									POLE BASE CONNECTION DATA					LUM. ARM ORIENT.	
			SPAN	TUBE SIZE	NOM JOINT	MTG HGT	ORIENT	MFG. RISE	BOLT ϕ	X	Y	W	H	APL	PPL	G	POLE TUBE SIZE	B.C.	S	F	P	T		ANCHOR BOLT SIZE
1	19/P1	50305-B29-Y1	45'-0"	7E-11.50x9.12x17'-0"	1'-9"	21'-0"	180°	2'	1 1/4	10	13	14	17	1 1/4	1 1/4	1/4	7E-14.00x10.22x27'-0"	22	23	15 9/16	8 1/4	2	2 x 84 x 6	180°
			*48'-0"	7E-11.50x9.12x17'-0"	1'-9"	19'-0"	270°	2'																
1	19/P2	50305-B29-Y2	44'-0"	7E-11.50x9.12x17'-0"	1'-9"	20'-6"	180°	2'	1 1/4	10	13	14	17	1 1/4	1 1/4	1/4	7E-14.00x10.22x27'-0"	22	23	15 9/16	8 1/4	2	2 x 84 x 6	180°
			34'-0"	7E-8.00x3.24x34'-0"	-	20'-6"	270°	2'																

*** FUTURE ARM - 48' ARM & HARDWARE NOT INCLUDED**

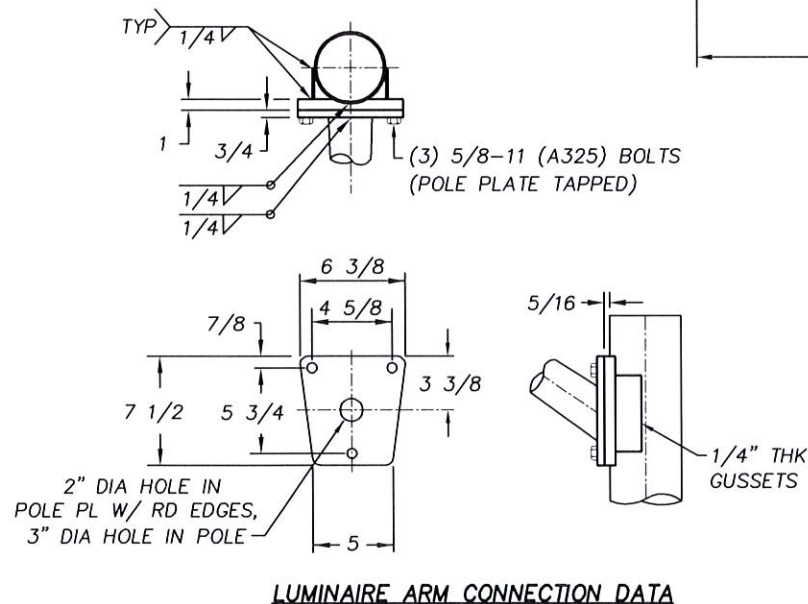
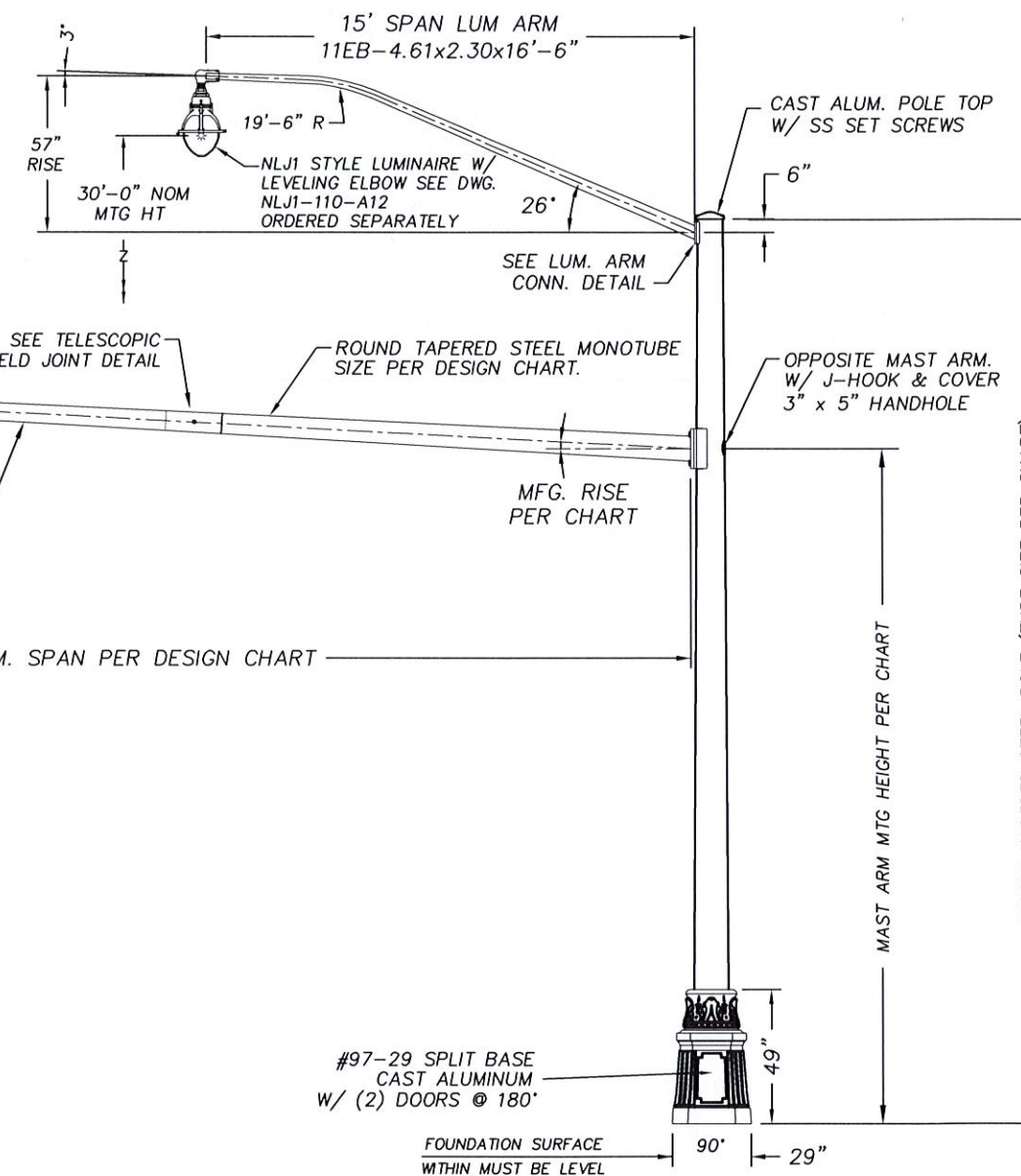
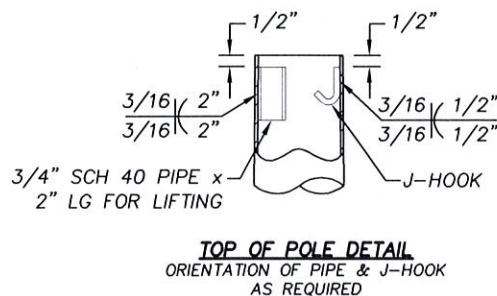
11 GA = 0.120" WALL THICKNESS
 7 GA = 0.179" WALL THICKNESS
 E = ROUND TAPERED STEEL TUBE @ 0.14 in/ft TAPER

DESIGN CRITERIA:

- DESIGNED IN ACCORDANCE WITH 2009 AASHTO "STANDARD SPECIFICATIONS FOR STRUCTURAL SUPPORTS FOR HIGHWAY SIGNS, LUMINAIRES, AND TRAFFIC SIGNALS" FOR 90 M.P.H. WIND ZONE.
- ANCHOR BOLTS ANALYZED FOR STEEL STRENGTH ONLY. THE ANCHOR BOLT EMBEDMENT LENGTH SHOWN ON THIS DRAWING SHALL BE VERIFIED BY THE FOUNDATION ENGINEER.
- THE EXPOSED LENGTH OF THE ANCHOR BOLT BETWEEN THE TOP OF THE FOUNDATION AND THE BOTTOM OF THE LEVELING NUT SHOULD NOT EXCEED ONE BOLT DIAMETER.
- PER AASHTO THE MINIMUM LENGTH OF ANY TELESCOPIC FIELD JOINT SHALL BE 1.5 TIMES THE INSIDE DIAMETER OF THE END OF THE FEMALE SECTION.
- VIBRATION IS MORE LIKELY TO OCCUR WHEN STRUCTURES ARE INSTALLED WITHOUT ATTACHING THE SIGNALS AND OR SIGNS. THEREFORE, THE INTENDED EQUIPMENT OR DAMPENING DEVICES MUST BE INSTALLED AT THE TIME OF ERECTION. BECAUSE VIBRATION IS GENERALLY UNPREDICTABLE, A MAINTENANCE PROGRAM SHOULD INCLUDE INSPECTION FOR INDICATIONS OF EXCESSIVE VIBRATION OR FATIGUE AND EXAMINATION FOR ANY STRUCTURAL DAMAGE OR BOLT LOOSENING.
- CUSTOMER TO CONFIRM ALL DIMENSIONS & ORIENTATIONS BEFORE RELEASING ORDER FOR MANUFACTURING.

MATERIAL SPECIFICATIONS

TAPERED TUBE	ASTM A595 GR A
PLATE	ASTM A36
HANDHOLE FRAME	ASTM A529 GR 50 or ASTM A572 GR 50 or ASTM A709 GR 50
HANDHOLE COVER	ASTM A36 or A1011
ANCHOR BOLTS	ASTM F1554 GR 105
ANCHOR BOLT NUTS	ASTM A563 GR DH
FLAT WASHERS	ASTM F436
ARM CONNECTION BOLTS	ASTM A325
ARM JOINT STUD	ASTM A36
"ANCO" LOCK NUTS	ASTM A563 GR DH
POLE TOP/ARM END CAP	ASTM B26 (356.0F) or A1011
PIPE	ASTM A501, A53 GR B or A500 GR B
S.S. HARDWARE	AISI-300 SERIES (18-8)
STRUCTURE FINISH	PER SALES ORDER
HARDWARE FINISH	HD GALV TO ASTM A153



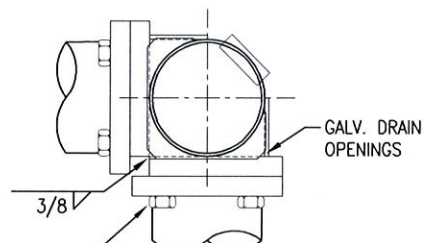
STATE: OHIO	REQ# / SO#: NOH-54361-1	R1	UPDATED DECO BASE DIMENSIONS, REMOVED NLJ1-A13 LUM DESIGN NOTE	7/22/14	jff	JFF
PROJECT NAME: EAST TECH DRIVE		REVISIONS				
ORNAMENTAL TRAFFIC & LIGHTING STRUCTURE FOR CLERMONT COUNTY, OHIO						
	DESIGNED BY: DAB		CHECKED BY: JS	DATE: 5/28/14	SCALE: NTS	ENG REF: 50305-B10
	50305-B29			REVISION: R1	SHEET: 1 OF 2	

Hand-drawn or scanned drawings are considered uncontrolled and are to be used for reference only. Those using this document for reference must take all precautions available to ensure that this document matches the current revision maintained in digital format, within but a single source and protected by edit restrictions.

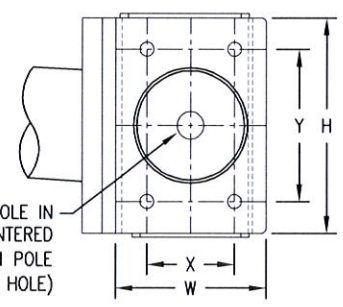
Handcopies of this document are considered uncontrolled and are to be used for reference only. Those using this document for reference must take all precautions available to ensure that this document matches the current revision maintained in digital format, within but a single source and protected by edit restrictions.

A B C D E F G H

4

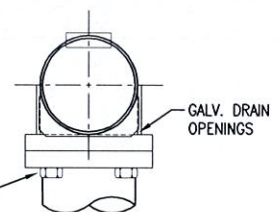


(8) HEX HD CONNECTION BOLTS (SIZE PER CHART) EACH W/ (1) FLAT WASHER

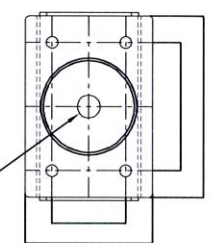


DUAL MAST ARM CONNECTION DETAIL

(4) HEX HD CONNECTION BOLTS (SIZE PER CHART) EACH W/ (1) FLAT WASHER

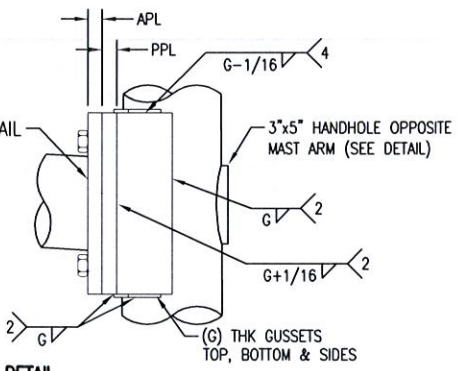


Ø2 1/2" WIRING HOLE IN POLE PLATE CENTERED OVER Ø3" HOLE IN POLE (DEBURR HOLE)



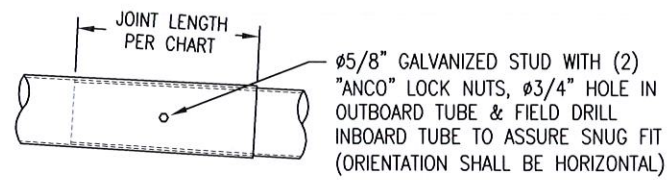
SINGLE MAST ARM CONNECTION DETAIL

SEE WELD DETAIL

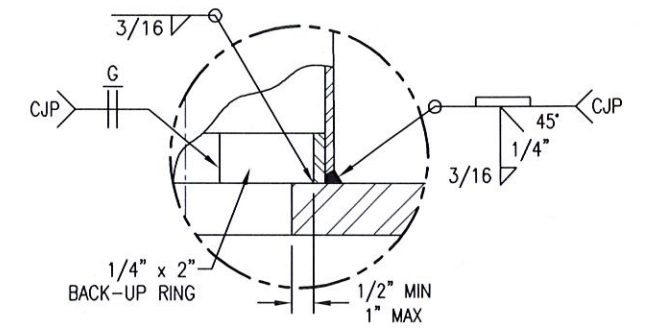


3

4



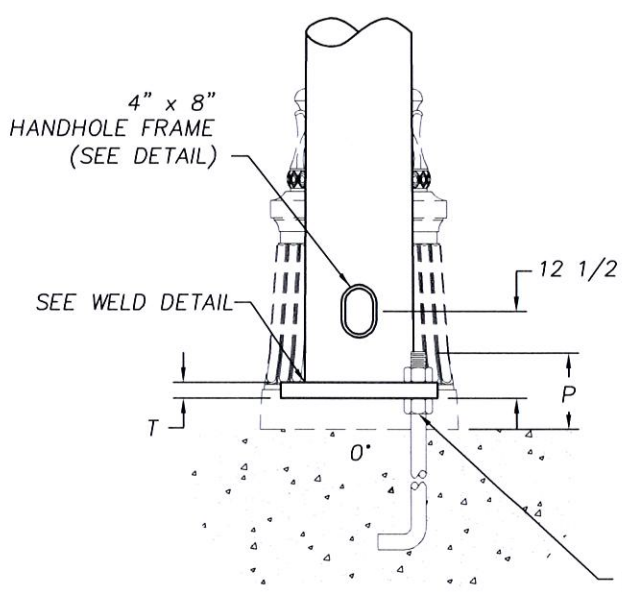
TELESCOPIC FIELD JOINT DETAIL (FOR ARMS OVER 40'-0")



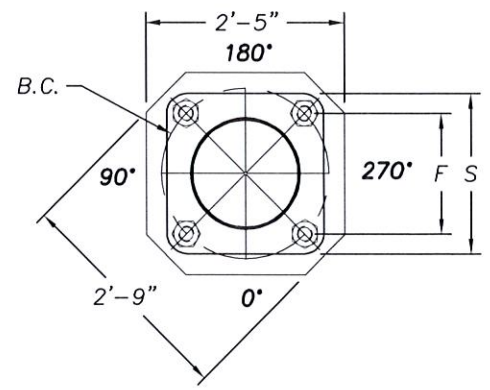
POLE BASE & ARM FLANGE WELD DETAIL

2

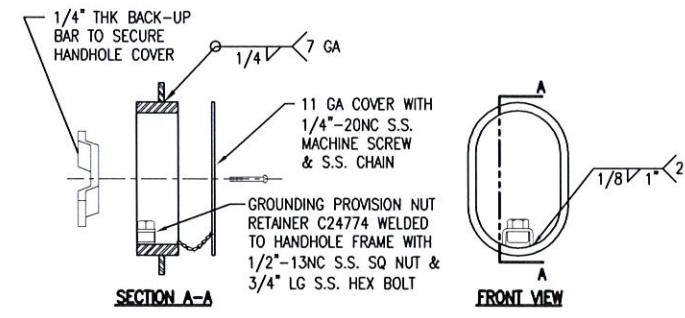
2



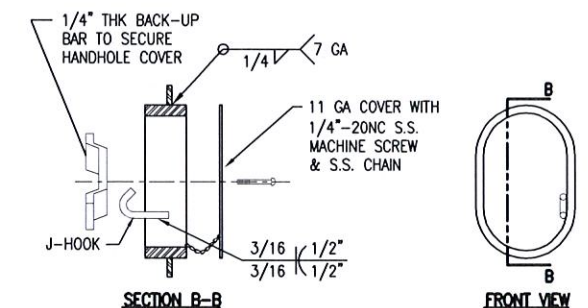
(4) ANCHOR BOLTS (SIZE PER CHART) MIN THRD LENGTH=P+1" & MIN GALV LENGTH=P+2" EACH W/ (2) HEX NUTS, (2) FLAT WASHERS, & (1) LOCK WASHER



3"x5" HANDHOLE FRAME DETAIL



4"x8" HANDHOLE FRAME DETAIL



STATE: OHIO	REQ# / SO#: NOH-54361-1	REV	DESCRIPTION	DATE	REV BY	CHK BY
PROJECT NAME: EAST TECH DRIVE			REVISIONS			

ORNAMENTAL TRAFFIC & LIGHTING STRUCTURE FOR CLERMONT COUNTY, OHIO

<p>Union Metal Corporation</p>	This document and the contents herein are proprietary and the property of Union Metal Corporation. This document is not to be copied, reproduced, or used for any reason except for the purposes which it was issued without the express written consent of Union Metal Corporation. Furthermore Union Metal Corporation reserves the right to recall this document and all copies at any time for any reason.				DESIGNED BY	CHECKED BY	DATE	SCALE	ENG REF
	DAB	<i>MS</i>	5/28/14	NTS	50305-B10				
					50305-B29		REVISION	SHEET	
					R1		2 OF 2		

1

1

A B C D E F G H